

5 in 1 ANTI-CORROSION WIPES

RECOMMENDED USES

- Machinery
- Manufacturing equipment
- Food processing equipment
- Tooling equipment
- Tools
- Marine vessels
- Electronics/control boxes
- Light fixtures
- Metal window frames
- Railings
- Outdoor furniture
- Bikes

**A CONVENIENT WAY
TO PROTECT METAL
SURFACES FROM RUST
WHILE LEAVING A
CLEAN, POLISHED FINISH**

ADVANTAGES

- Effective rust prevention
- Rust inhibitor penetrates deep
- Leaves a protective micro-barrier that is dry to the touch
- Dielectric to 40 kV; stops electrolysis
- Environmentally friendly



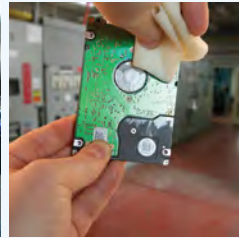
5 in 1 ANTI-CORROSION WIPES

S2S 5 in 1 Anti-Corrosion Wipes combine a cleaner, rust inhibitor, penetrant, lubricant and dielectric in one to provide a convenient way to care for your tools and metal surfaces.

Each easy-to-use, disposable wipe is infused with an S2S corrosion preventive coating. Proven to combat rust in the most corrosive marine environments, S2S formulas are long lasting lubricants and penetrants that bond to metal, like a magnet to steel, displacing water and oxygen and shutting down rust cells.

S2S 5 in 1 Wipes leave a protective micro-barrier that is dry to the touch and environmentally friendly. Store them in your shop, garage or shed and use them as often as needed to keep your metal surfaces clean and rust free.

**GREAT FOR
EVERYDAY
MAINTENANCE OF
METAL SURFACES**



WIRE ROPE CORROSION CONTROL

RECOMMENDED USES

- Cranes
- Winches
- Hoists
- Mooring lines
- Towing wire ropes
- Drilling rigs
- Suspension bridges
- Guy wires
- Wire rope slings
- Post tension cables

**PENETRATES AND
LUBRICATES TO THE
CORE ENSURING
EVERY STRAND IS
COATED**

ADVANTAGES

- Easy-to-apply
- Polar bonds to all metals
- Long lasting adhesion
- Non-tacky film resists dirt and debris
- Penetrates and lubricates to the core
- Reduces friction and wear
- Electrically non-conductive; stops electrolysis
- Can withstand extreme temperatures
- Non-hazardous and non-toxic
- Can be top-coated with S2S HD Corrosion Shield for extra protection
- Excellent for loosening seized studs and nuts in valves, flanges etc.



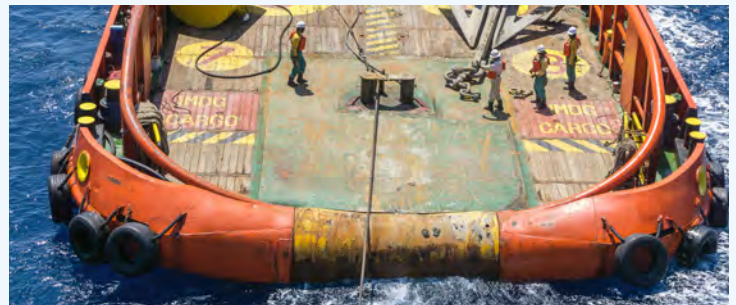
WIRE ROPE CORROSION CONTROL

S2S Wire Rope Corrosion Control is formulated to protect all types of wire rope from rust and corrosion. It bonds to metal, like a magnet to steel, displacing water and oxygen and preventing rust long term.

Unlike grease that only sits on the surface of wire rope, S2S formula is a superior lubricant and penetrant. It creeps below the surface, in and around individual fibres all the way to the core, providing excellent anti-seize capabilities.

For more than 30 years, S2S corrosion preventive solutions have been successfully protecting marine vessels and heavy equipment in the harshest environments. S2S Wire Rope prevents rust caused by salt spray and extreme weather. It is non-toxic and is easy-to-apply with an airless sprayer, brush or by dunking.

**EXCELLENT PENETRANT
AND ANTI-SEIZE THAT
BRINGS NEW LIFE TO
RUSTED WIRE ROPES**



DI-ELECTRIC SPRAY

RECOMMENDED USES

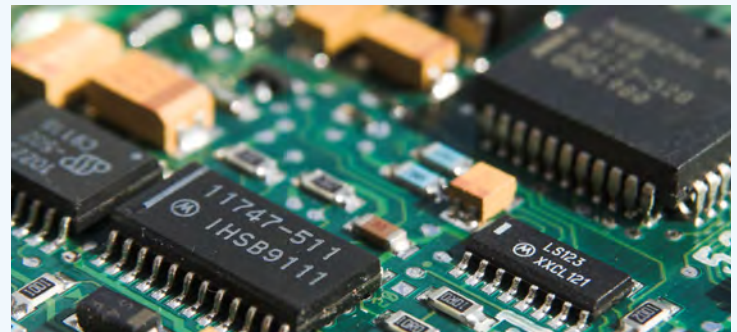
- Circuit boards
- Wires
- Battery terminals
- Electric motors
- Electronics
- Switches
- Connectors

ADVANCED FLUID FILM TECHNOLOGY PROTECTS ELECTRONICS FROM RUST AND CORROSION

ADVANTAGES

- Displaces moisture
- Polar bonds to all metal surfaces
- Penetrates existing rust & corrosion
- Shuts down corrosion & electrolysis
- Resists splash, spray & submersion
- High pressure lubricant
- Dielectric strength >40kV
- Environmentally Friendly

Di-Electric Spray forms a dynamic, self-healing, non-hardening and dripless film. It acts as a liquid de-scaler and polar bonds to metal to form a long lasting, protective barrier to rust. Apply it directly to circuit boards, battery terminals and electronics to halt electrolysis and prevent corrosion. Di-Electric Spray is environmentally friendly. One application provides a thin coating of 1-4 mils.



Electronics - Avoid Replacement Parts & Service Costs

Corrosion in electronic components is insidious and cannot be readily detected. When corrosion failure occurs, it is often dismissed as just a failure and the part or component is replaced. The most common reasons for corrosion-related failure is atmospheric humidity and environmental contaminants.



Coated with Di-Electric Spray

- Dielectric strength 40,000 volts
- Displaces moisture
- Penetrates existing rust & corrosion
- Shuts down rust cells & electrolysis

Di-Electric Spray is high performance protection from water & corrosive contaminants, ideal for integrated & printed circuit boards, conductors, connectors, contacts, electric connections, electric motors and wires.

STOP RUST & CORROSION

Circuit board from a Canadian Coast Guard waterproof radio that leaked while submerged in the arctic. Circuit board and areas coated with Di-Electric Spray are corrosion free. Everywhere else is heavily corroded. More than a decade keeping Canadian Navy electronics corrosion free.



"The failure of one of our livestock identification scanning devices would ordinarily mean the disposal of an expensive device. With only one small application to the problematic area with S2S DI-ELECTRIC it was possible to restore full operating

capabilities. We will continue to use S2S products on all our farm equipment and machinery."

Malcolm Smith, cattle farmer, Australia



Unprotected Circuit, Heavily Corroded

PLID WRAP® ANTI-CORROSION TAPE

RECOMMENDED USES

- Piping and pipelines
- Fittings, flanges and valves
- Pilings and pier structures
- Splash zones
- Structural steel and support bases
- Repair patch wall corners and other problem areas
- Combat corrosion under insulation (CUI)

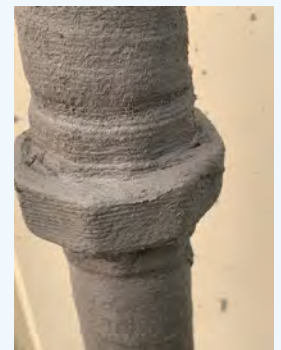
**EASY-TO-APPLY.
NO PRIMER PASTE
REQUIRED.**

ADVANTAGES

- Outlasts the leading competitor in ASTM B117-18 Salt Spray Testing
- Simple one-step application process
- Non-hazardous, non-toxic and eco-friendly
- Can be applied to wet surfaces
- Wide range of operating temperatures
- Polar bonds to all dissimilar metals
- Dielectric strength, shuts down electrolysis
- Can be used to patch problem areas
- Available in custom colors and widths



After 1000 hrs of ASTM B117-18 Salt Spray Test



APPLICATIONS

Above Ground:

Use on metal pipes, flanges, valves, fittings, bases of structures, plumbing connections, hydraulic hose fittings, cable splices, battery terminals, threaded connectors, trailer axles and U-bolts. Works on dissimilar metals.

Below Ground and Under water:

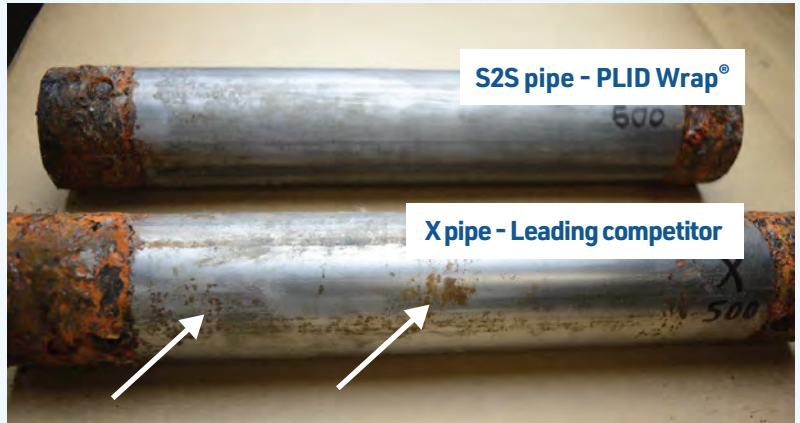
Ideal for below ground piping, pipelines, structural metal, support bases and H-piles. Protects submarine pipelines, piping systems, under decking piping, offshore platforms, pilings and pier structures.

Patch Problem Areas:

Available in custom colors and widths. Use to patch rust in problem areas such as wall corners. Adheres to all metal surfaces. Stops rust in its tracks.

ACCESSORIES

S2S offers several specialized overwraps for use with PLID Wrap anti-corrosion tape in below ground, under water and salt spray applications, when needed.



Evidence of corrosion on X-pipe after 500 hrs of ASTM B117-18 Salt Spray Test

S2S PLID Wrap® is an industrial tape infused with an S2S high performance, long lasting rust inhibitor. Unlike petrolatum tapes that require surface preparation and primer paste, S2S is a simple, one-step application process.

Simply apply to desired surface, even over existing rust and paint. The infused rust inhibitor creates a long lasting, protective barrier that penetrates into pitting corrosion. Leaves a pliable waxy finish that conforms to irregular shapes and does not sag.

Available in 2", 4", 6" and other custom widths and colours.



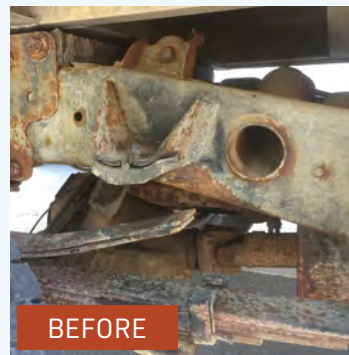
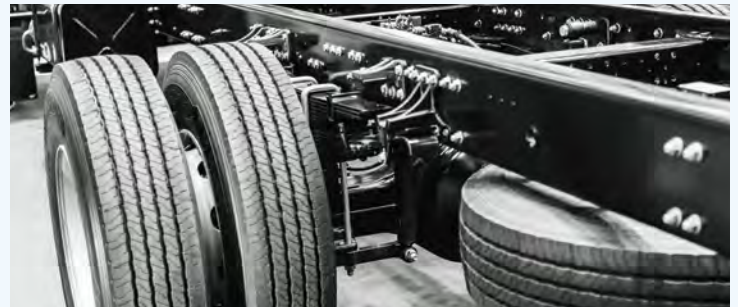
RECOMMENDED USES

- Fleet vehicles
- Trucks and trailers
- Heavy equipment
- Automobiles
- Rail cars
- Agricultural equipment
- Battery terminals
- Electrical connectors
- Engine bays

LONG LASTING WET FILM TECHNOLOGY THAT POLAR BONDS TO ALL METAL SURFACES AND STOPS RUST IN ITS TRACKS

ADVANTAGES

- Easy-to-apply
- Works on dissimilar metals
- Resists splash and spray
- Penetrates under existing rust and de-scales
- Non-tacky coating does not attract dirt and debris
- Electrically non-conductive; stops electrolysis
- Rubber compatible to ASTM D471 standards
- Wide range of operating temperatures
- Self-healing film creeps into scratches
- No curing time
- Environmentally friendly

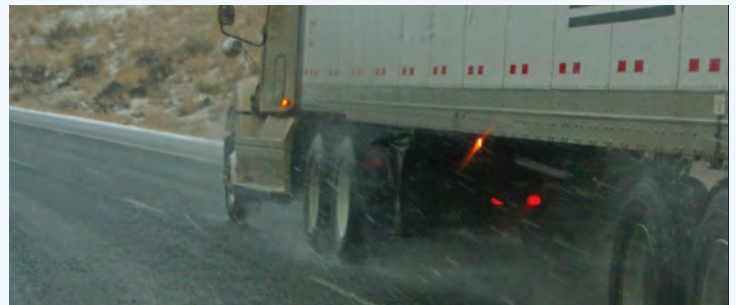
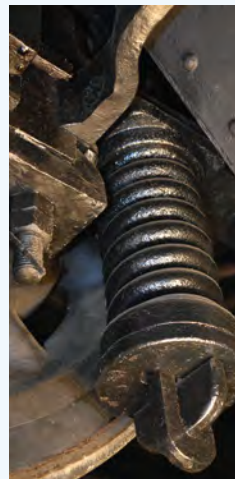


S2S Automotive Rust Proofing is formulated to protect vehicles of all types from rust and corrosion. It instantly bonds to metal, like a magnet to steel, displacing water and oxygen and shutting down rust cells.

S2S Automotive Rust Proofing is a superior lubricant and penetrant, offering several advantages. It creeps into hard to reach areas, is an excellent anti-seize and penetrates under existing rust to act as a descaler. S2S Automotive Rust Proofing is electrically non-conductive, halts electrolysis and prevents corrosion caused by dissimilar metals.

For more than 30 years, S2S corrosion preventive solutions have been successfully protecting marine vessels and heavy equipment in the harshest environments. S2S Automotive Rust Proofing is the ultimate rust inhibitor for cars, trucks and trailers. It is easy-to-apply with an airless sprayer, brush or roller and there is no curing time. S2S is safe on the environment, non-toxic and non-hazardous.

RELIABLE PROTECTION FOR VEHICLES FROM EXTREME WEATHER, ROAD SALT AND SAND



RECOMMENDED USES

Ideal for long term rust and corrosion prevention on all metal types. Recommended for bridges and steel structures, including:

- Cable-Stayed and Suspension Bridges
- Truss Bridges
- Beam Bridges
- Arch Bridges (wrought iron)
- Cantilever Bridges

A PENETRATING RUST INHIBITOR THAT PROVIDES LONG TERM PROTECTION

ADVANTAGES

- No sandblasting required
- Polar bonds to all metals, even over existing rust and paint
- Can be applied to damp surfaces
- Stops rust on contact
- Creates an even, thin film
- Creeps into pitting corrosion, cracks and crevices
- Prevents corrosion on bolts
- Dielectric properties; stops electrolysis



S2S Bridge & Steel Corrosion Control is the ultimate rust inhibitor for bridges and steel structures. It polar bonds to all types of metal, like a magnet to steel, displacing water and oxygen and shutting down rust cells. S2S Bridge & Steel is an excellent penetrant. It creeps into hard to reach areas and creates a protective thin film. When applied over existing rust it penetrates under the rust and acts as a descaler. It requires no sandblasting and works just as well at preventing rust and corrosion when applied over existing paint as when applied to bare metal. S2S Bridge & Steel has a dielectric strength of 8900 volts. It is electrically non-conductive, halts electrolysis and prevents corrosion caused by dissimilar metals.

For more than 30 years, S2S rust inhibitors have been successfully protecting marine vessels and heavy equipment in the harshest environments. S2S is proven to prevent rust and corrosion caused by salt water, sea spray and extreme weather. It is long lasting and safe for the environment.

APPLICATION

Application of S2S Bridge & Steel Corrosion Control requires no sandblasting. It is easily applied with an airless sprayer, brush or roller. It is non-toxic, non-hazardous and safe on the environment.

Coverage: 150 square feet per gallon.



Steep Creek Bridge
- Uncoated



Steep Creek Bridge
- 18 yrs after application of S2S



**LONG LASTING WET
FILM TECHNOLOGY
THAT POLAR BONDS
TO ALL METAL
SURFACES AND STOPS
RUST IN ITS TRACKS**

ANCHOR CHAIN CORROSION CONTROL

RECOMMENDED USES

- Commercial vessels
- Offshore oil & gas platforms
- Navigational buoys
- Mooring buoys
- Cruise ships
- Landing craft ramps

A LUBRICATING RUST INHIBITOR THAT REQUIRES NO SANDBLASTING

ADVANTAGES

- No sandblasting
- Can be applied to damp surfaces
- Polar bonds to all metals, even over existing rust and paint
- Stops rust on contact
- Creeps into pitting corrosion, cracks and crevices
- Excellent lubricant and anti-seize
- Prevents corrosion between links
- Dielectric properties; stops electrolysis
- Environmentally friendly



ANCHOR CHAIN CORROSION CONTROL

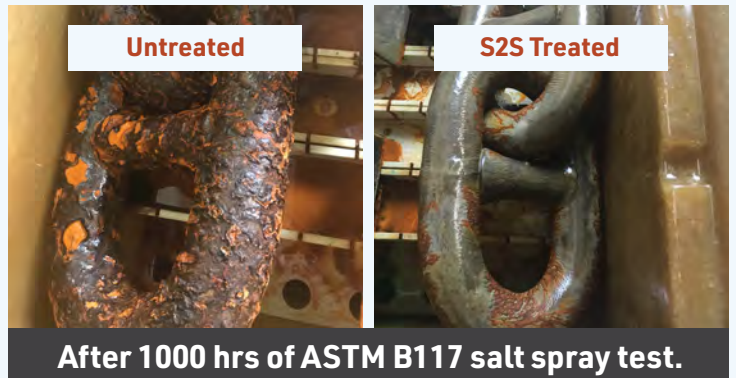
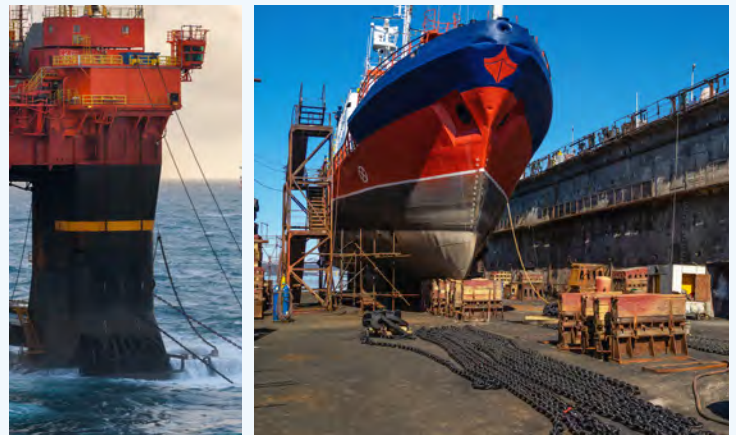
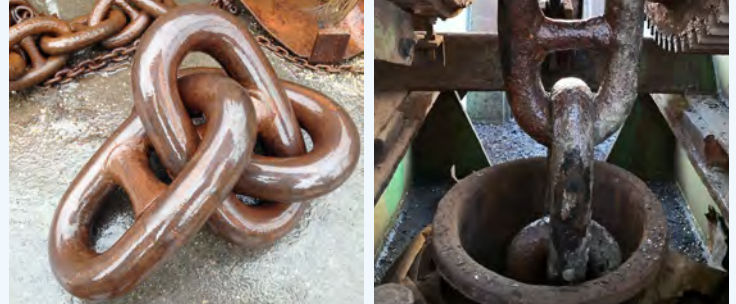
S2S Anchor Chain Corrosion Control works by polar bonding to metal surfaces, like a magnet to steel, displacing water and oxygen. It is a powerful penetrant that creeps into hard to reach areas, providing excellent lubrication and anti-seize capabilities. It requires no sandblasting and is easy-to-apply with an airless sprayer, brush or by dunking.

S2S Anchor Chain is recommended for use on the entire anchoring system, including:

- Chain
- Pipes (spurling, chain, hawse)
- Chain locker
- Anchor windlass
- Windlass brakes
- D-Shackle
- Swivels
- Kenter shackles
- Chain stoppers
- Bolts and pins

STOP RUST AND CORROSION

For more than 30 years, S2S has been successfully protecting marine vessels in the harshest environments. S2S Anchor Chain is proven to prevent rust and corrosion caused by salt water, fog and extreme weather. It is non-toxic and has dielectric properties that enable it to halt electrolysis.



VOID & RUDDER FLOAT COAT

ADVANTAGES

- No sandblasting
- Environmentally friendly
- Ultra Low VOCs
- Eliminates the need to work in confined spaces
- Can be applied to damp, painted and rusted surfaces
- Is a self-healing lubricant
- Penetrates under existing rust and de-scales
- Electrically non-conductive; stops electrolysis

LONG LASTING WET FILM TECHNOLOGY THAT POLAR BONDS TO ALL METAL SURFACES AND STOPS RUST IN ITS TRACKS

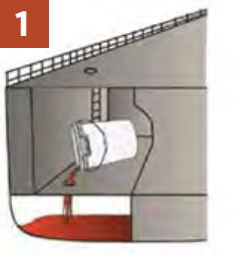
S2S Void & Rudder Float Coat is a rust inhibitor specially formulated for void spaces on marine vessels. S2S is a self-healing lubricant that penetrates into cracks and de-scales existing rust. It has been used in Canada's heavy marine industry for more than thirty years and is proven to be an effective corrosion preventive solution in unventilated void spaces. S2S is long lasting, easy-to-apply and non-toxic.



Ballast tank coated in S2S

VOID & RUDDER FLOAT COAT

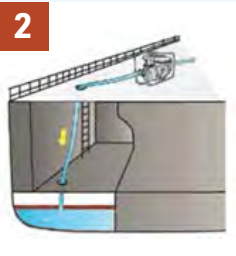
APPLICATION GUIDE



1

Measure & pour S2S float coat

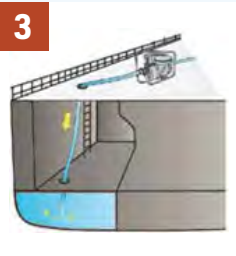
Calculate product requirement: Each gallon will coat 200 sq feet. Add 20% to final calculation. A pail coats 1000 sq feet; a drum coats 10,000 sq feet.



2

Gently & slowly pump in water

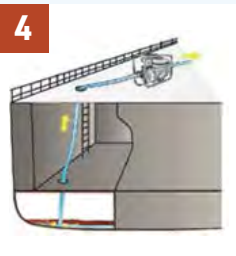
Place pump hose at floor of tank and slowly fill with water. Note: S2S Float Coat is lighter than water and will float on top and polar bond to the metal as it rises.



3

Fill void area to the top of space

When the water and Float Coat reach the top, turn off the pump and let the water settle for 24 hours. This will allow the Float Coat to clearly separate from the water.



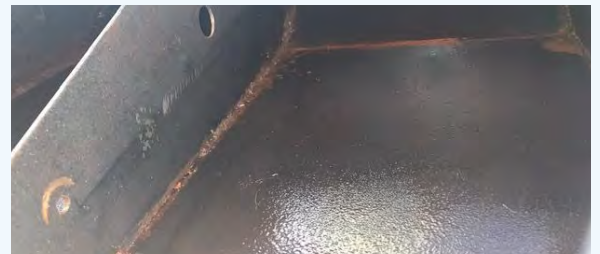
4

Gently & slowly pump water out

Slowly pump the water out from the bottom. Use a screen to filter out rust flakes. The last portion of discharge should be captured and disposed of according to local, municipal and federal regulations.



Eliminates the need to work in confined spaces



Rudder coated in S2S

CORROSION SHIELD

A ONE-STEP, THIN, CLEAR COATING FOR METAL AND ELECTRICAL PARTS. IDEAL PROTECTION DURING STORAGE AND TRANSPORTATION.

RECOMMENDED USES

- Wellheads
- Pipelines & Piping
- Electrical & Electronics
- Fittings & Flanges
- Offshore rigs
- Machined surfaces
- Batteries
- Sculptures
- Cranes
- Motors

ADVANTAGES

- 500+ hours without corrosion in ASTM B117-18 Salt Spray Chamber Test
- Long lasting
- Rubber compatible to ASTM D471 standards
- Wide range of operating temperatures
- Dielectric strength 36,000 volts
- Can be applied over existing rust and paint
- Can be applied to damp surfaces
- Removes easily with high pH detergent
- Self-healing; stops rust on contact
- Non-hazardous and easy to use
- Ultra low VOCs; Zinc-Free
- Water discharge meets the requirements of the California Environmental Protection Agency



CORROSION SHIELD

S2S Corrosion Shield works by polar bonding to metal, like a magnet to steel, and displacing water and oxygen. It creates an even, lubricating film that creeps into hard to reach areas, providing long lasting protection and excellent anti-seize capabilities.

For heavy duty protection, try **S2S HD Corrosion Shield**.

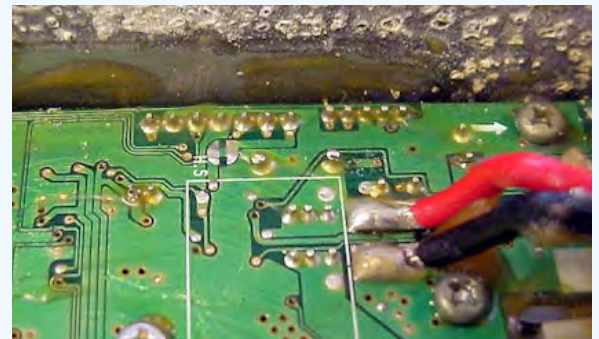
PROTECTION FOR EPOXY COATED SURFACES AND BARE METAL DURING LONG TERM STORAGE.

APPLICATION

Application of S2S Corrosion Shield requires no surface preparation. It is easily applied by air or battery-operated paint sprayer, brush or roller. Provides a 1-2 mil clear coat. Area coverage per gallon of product is 200 sq/ft.

REMOVAL

S2S Corrosion Shield bonds to metal for long lasting adhesion. It does not typically need to be removed before reactivating equipment but if desired simply wash with a high pH detergent and water.



HD CORROSION SHIELD

A ONE-STEP, THICK FILM COATING RECOMMENDED FOR USE IN HIGHLY CORROSIVE ENVIRONMENTS.

RECOMMENDED USES

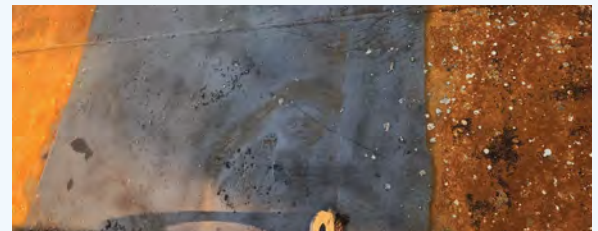
- Equipment
- Parts
- Wellheads
- Tank deck piping & valves
- Fitting & Flanges
- Offshore rigs
- Machined surfaces
- Sculptures
- Cranes
- Motors
- Bottom of ballast tank plating

ADVANTAGES

- 1000+ hours without corrosion in ASTM B117-18 Salt Spray Chamber Test
- Ultra low VOCs & Zinc-Free
- Dielectric strength 3,200 volts
- Works on dissimilar metals
- Rubber compatible to ASTM D471 standards
- Wide range of operating temperatures
- Safe on batteries, electrical and electronics
- Can be applied over existing rust and paint
- Can be applied to damp surfaces
- Removes easily with high pH detergent
- Environmentally friendly



BEFORE
Sandblasted white metal. Center coated in S2S



AFTER
Coated area rust free after 12 months exposure on Gulf of Mexico

HD CORROSION SHIELD

S2S HD Corrosion Shield works by polar bonding to metal surfaces, like a magnet to steel, and displacing water and oxygen. It creates an even, lubricating thick film that creeps into hard to reach areas, providing long lasting protection against rust and corrosion and excellent anti-seize capabilities.

For a thin, clear protective coating for equipment, machinery, monuments and much more, try **S2S Corrosion Shield**.

IDEAL SOLUTION FOR LONG TERM STORAGE, LAY-UP AND EXPORT OF METAL PIPING, PLATES AND EQUIPMENT

APPLICATION

Application of **S2S HD Corrosion Shield** requires no surface preparation. It is easily applied by air or battery-operated paint sprayer, brush or roller. Provides an 13-20 mil top-coat. Area coverage per gallon of product is 100 sq/ft.

REMOVAL

S2S HD Corrosion Shield bonds to metal for long lasting adhesion. It does not typically need to be removed before reactivating equipment but if desired simply wash with a high pH detergent and water.



BEFORE
Sandblasted white metal



AFTER
6 months exposure on
Gulf of Mexico

